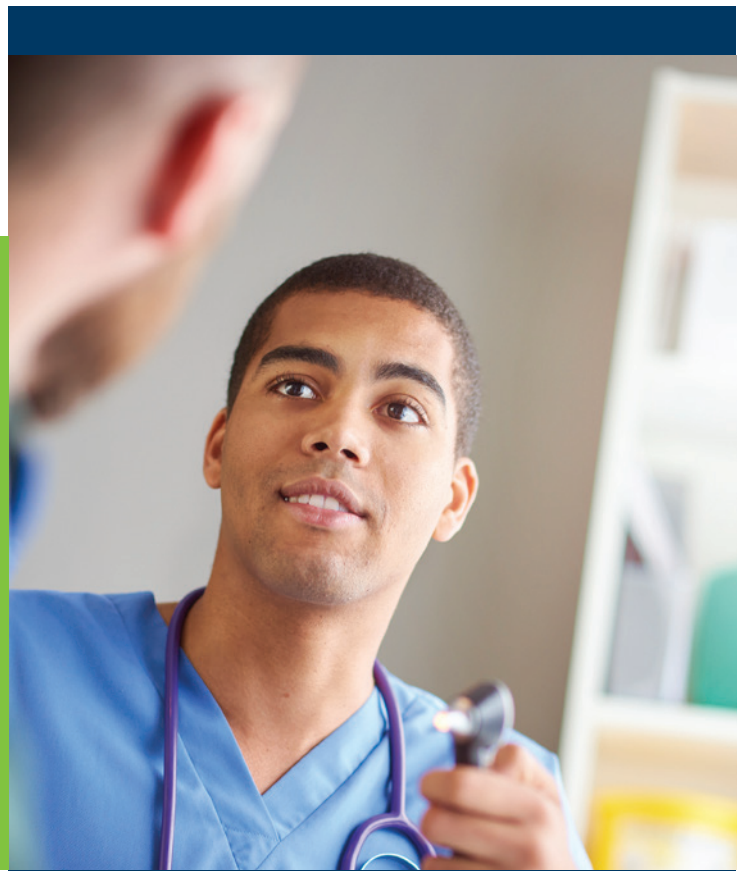


Hospitals, Medical Centers, and Providers*

Healthfirst Pro and Pro Plus EPO Plan Network

Our broad network makes accessing care easy. Members can choose from an extensive network of top-quality doctors, specialists, hospitals, and urgent care centers—so they can get the care they need when they need it.



Healthfirst Network Numbers by County**

Specialty by County	PCPs and Pediatricians	Specialists	GRAND TOTAL OF PROVIDERS
Bronx	1,415	3,719	5,134
Kings	1,319	3,295	4,614
Nassau	1,181	3,400	4,581
New York	1,656	5,885	7,541
Queens	1,032	2,787	3,819
Richmond	230	659	889
Suffolk	320	1,654	1,974
Westchester	177	970	1,147
GRAND TOTAL	7,330	22,369	29,699

Continued on back



This hospital and medical center list applies to Healthfirst Pro and Pro Plus members enrolled in the Platinum, Gold, Silver, or Bronze plans.

Interfaith Medical Center
 Maimonides Medical Center
 Nassau University Medical Center
 SBH Health System
 St. John's Episcopal Hospital
 SUNY Downstate Medical Center
 The Brooklyn Hospital Center
 BronxCare Health System

Medisys Health Network:

Flushing Hospital Medical Center
 Jamaica Hospital Medical Center

Montefiore Health System:

Children's Hospital at Montefiore
 Jack D. Weiler Hospital (Einstein)
 Montefiore Hospital
 Montefiore Mount Vernon Hospital
 Montefiore New Rochelle Hospital
 Montefiore Wakefield Hospital

Mount Sinai Health System:

Mount Sinai Beth Israel
 Mount Sinai Brooklyn
 Mount Sinai Queens
 Mount Sinai St. Luke's
 Mount Sinai West
 New York Eye and Ear Infirmary of Mount Sinai
 The Mount Sinai Hospital

Northwell Health:

Glen Cove Hospital
 Huntington Hospital
 Lenox Hill Hospital
 Long Island Jewish Forest Hills
 Long Island Jewish Medical Center
 Long Island Jewish Valley Stream
 North Shore University Hospital at Manhasset
 Northern Westchester Hospital
 Peconic Bay Medical Center
 Phelps Hospital
 Plainview Hospital
 Southside Hospital

Staten Island University Hospital – North Campus
 Staten Island University Hospital – South Campus
 Syosset Hospital
 The Long Island Home – South Oaks Hospital
 Zucker Hillside Hospital

NYU Langone Health System:

NYU Langone Hospital – Brooklyn
 NYU Langone Hospital – Tisch
 NYU Langone Orthopedic Hospital

NYC Health + Hospitals:

NYC Health + Hospitals/ Bellevue
 NYC Health + Hospitals/ Coney Island
 NYC Health + Hospitals/ Elmhurst
 NYC Health + Hospitals/ Harlem
 NYC Health + Hospitals/ Jacobi
 NYC Health + Hospitals/ Kings County

NYC Health + Hospitals/ Lincoln
 NYC Health + Hospitals/ Metropolitan
 NYC Health + Hospitals/ North Central Bronx
 NYC Health + Hospitals/ Queens
 NYC Health + Hospitals/ Woodhull

Large Physician Groups:

Advantage Care Physicians
 All Medical Care IPA
 Bronx United IPA
 Coalition of Asian American IPA (CAIPA)
 Empire Gate IPA
 Excelsior IPA
 Korean American Physicians IPA (KAPIPA)
 Med Alliance
 ProHEALTH Care

Urgent Care:

CityMD Urgent Care
 Modern MD Urgent Care
 Northwell Go-Health
 PM Pediatrics

Looking for the right doctor to meet your needs?
 Visit HFDocFinder.org to search by location, specialty, and more!

Plans are offered by affiliates of Healthfirst, Inc. Plans contain exclusions and limitations.

*All network providers may not have been listed. Providers may have been added to or removed from the list after this was printed.

**These totals are based on our provider network for the Healthfirst Insurance Company as of 3/1/2018.

Healthfirst Pro Plus EPO and Pro EPO Plan Network: Urgent Care Centers (Abbreviated Listing)*

Healthfirst Pro Plus EPO Plans: Platinum, Gold, Silver, and Bronze

Healthfirst Pro EPO Plans: Platinum, Gold, Silver, and Bronze

<p>Bronx</p> <ul style="list-style-type: none"> AFC Urgent Care CityMD Metro UrgiCare Moonlight Pediatrics Riverdale Urgent Care Throgs Neck Walk In Med Care Throgs Neck Urgent Care Urgent Care of Eastchester Urgent Care of Parkchester 	<ul style="list-style-type: none"> RJ Medical and Urgent Care Triborough Medical Urgent Care <p>Nassau</p> <ul style="list-style-type: none"> AFC Urgent Care CityMD Excel Urgent Care Express Medical Care Northwell Health/GoHealth Urgent Care Center PM Pediatrics Prompt Care MD South Nassau Walk-in Medical Care Statcare Stat MD Physicians Urgent MD 	<p>Queens</p> <ul style="list-style-type: none"> Bay View Urgent Care Centers Urgent Care CityMD Excel Urgent Care First Choice Walk-In Medical Care First Med Immediate Medical Care Hillside Urgent Care HP Medical Care Metro Urgent Medical Care Northwell Health/GoHealth Urgent Care Center PM Pediatrics RapidMD Statcare Urgent Care Glendale 	<p>New Jersey**</p> <ul style="list-style-type: none"> CityMD <p>Rockland**</p> <ul style="list-style-type: none"> CityMD PM Pediatrics Walk-In Medical Urgent Care <p>Suffolk**</p> <ul style="list-style-type: none"> CityMD Cure Urgent Care Excel Urgent Care Express Medical Care Northwell Health/GoHealth Urgent Care Center Pediatric Urgent Care PM Pediatrics
<p>Kings</p> <ul style="list-style-type: none"> Accord Urgent Care PC AG Urgent Care Brooklyn Urgent Care CityMD Metro Urgent Medical Care ModernMD Urgent Care PM Pediatrics Pediatric Urgent Care Quality First Urgent Care 	<p>New York</p> <ul style="list-style-type: none"> CityMD Cure Urgent Care Midtown NY Doctors Urgent Care Mt. Sinai Urgent Care Northwell Health/GoHealth Urgent Care Center 	<p>Richmond</p> <ul style="list-style-type: none"> Bay View Urgent Care CityMD Northwell Health/GoHealth Urgent Care Center 	<p>Westchester**</p> <ul style="list-style-type: none"> AFC Urgent Care AppleMed Urgent Care CityMD PM Pediatrics Southern Westchester Urgent Care Urgent Care of Westchester White Plains Walk In Medical Care

We have more than 136*** Urgent Care Centers in our network!

Visit HFDocFinder.org to search by location, specialty, and more!



Plans are offered by affiliates of Healthfirst, Inc. Plans contain exclusions and limitations.

*All network providers may not have been listed. Providers may have been added to or removed from the list after this was printed.

**Healthfirst Small Business EPO plans not available for group situs in these counties. However, network access extends here.

***This total is based on our provider network for the Healthfirst Insurance Company as of 12/01/2017.